

Stationary Longarm Table Insert Assembly Instructions

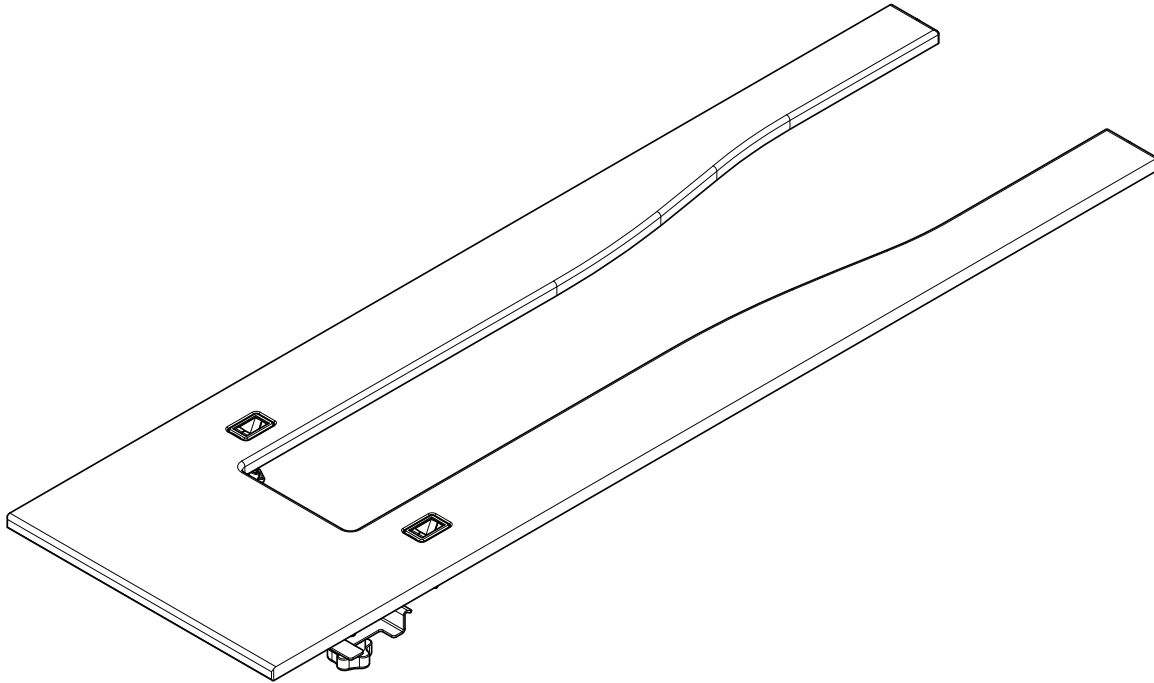


Table of Contents

- 2 What's Included, Replacement Parts and Hardware
- 4 Preparing the Stand Plate
- 5 Installing the Insert Assembly
- 6 Fine Adjustment of the Machine and Insert
- 6 Fine Adjustment of the Stand Plate
- 7 Connections
- 7 Care and Cleaning

Introduction

This table utilizes an insert that is cut to fit specific machines. The insert and insert instructions are packaged separately from the table. The table has an adjustable stand plate for fine tuning the machine height. The final stand plate adjustment will be made by checking the machine height and position to the insert.

What’s Included

(1) 16" Insert Assembly

Replacement Parts and Hardware

(1)	QT09000-101	Table Insert 16
(1)	QT09000-104	Insert Guide Plate-Front
(1)	QT09000-105	Sensor Board Housing
(2)	QT09000-106	Insert Guide Plate-Rear
(2)	QT09000-107	Knob w/Threaded Insert
(2)	QM10072	Optical Sensor
(1)	QM20067-2	Control Board OSR
(1)	QM20120	Cable Insert to Machine OSR
(1)	QM20078	Cable FP (foot pedal) Extender OSR
(12)	QM00500-14	Screw-M4x6 PHP ZN
(3)	QM10161	Screw-M4x8 SKC ZN
(4)	QM20802-4-129	Screw-M4x6 SHCS ZN
(2)	QM10866	Screw-M4x10 SKF ZN
(2)	QM40222	Cable wire tie mount
(2)	No Part Number Available	Wire tie

Assembly

The above parts ship already assembled together as one, 16" Insert Assembly. Images are shown below to help identify replacement parts.



Cable Insert to Machine OSR
(1) QM20120



Cable FP (Foot Pedal)
Extender OSR
(1) QM20078

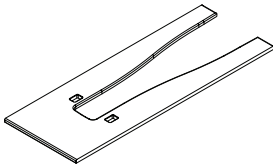
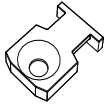


Table Insert 16
(1) QT09000-101



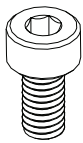
Cable Wire Tie Mount
(2) QM40222

NOT SHOWN

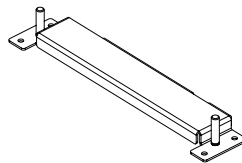
Cable Wire Tie
(2) No Part Number Available



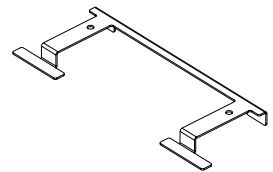
Screw-M4x10 SKF ZN
(2) QM10866



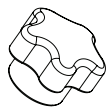
Screw-M4X8 SKC ZN
(3) QM10161



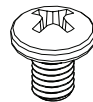
Sensor Board Housing
(1) QT09000-105



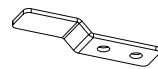
Insert Guide Plate-Front
(1) QT09000-104



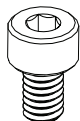
Knob w/Threaded Insert
(2) QT09000-107



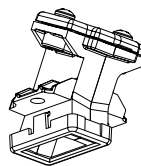
Screw-M4x6 PHP ZN
(8) QM00500-14



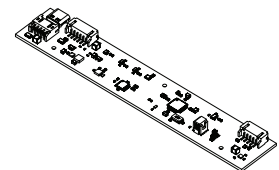
Insert Guide Plate-Rear
(2) QT09000-106



Screw-M4x6 SHCS ZN
(4) QM20802-4-129



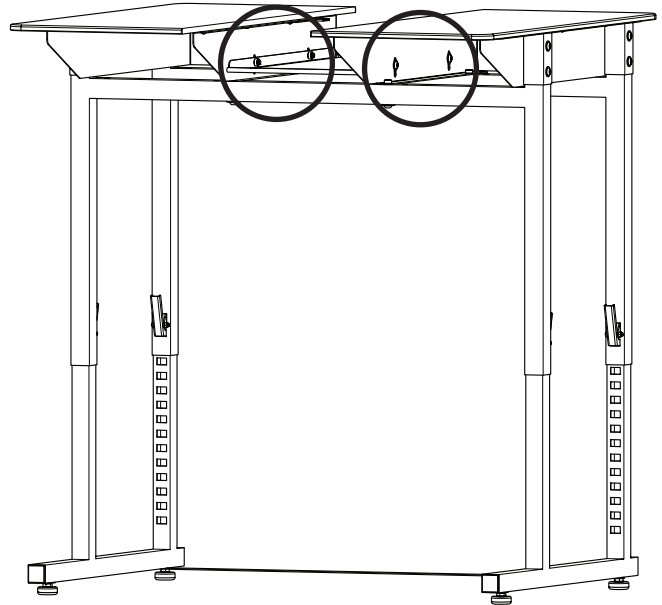
Optical Sensor
(2) QM10072




Control Board
(1) QM20067-2

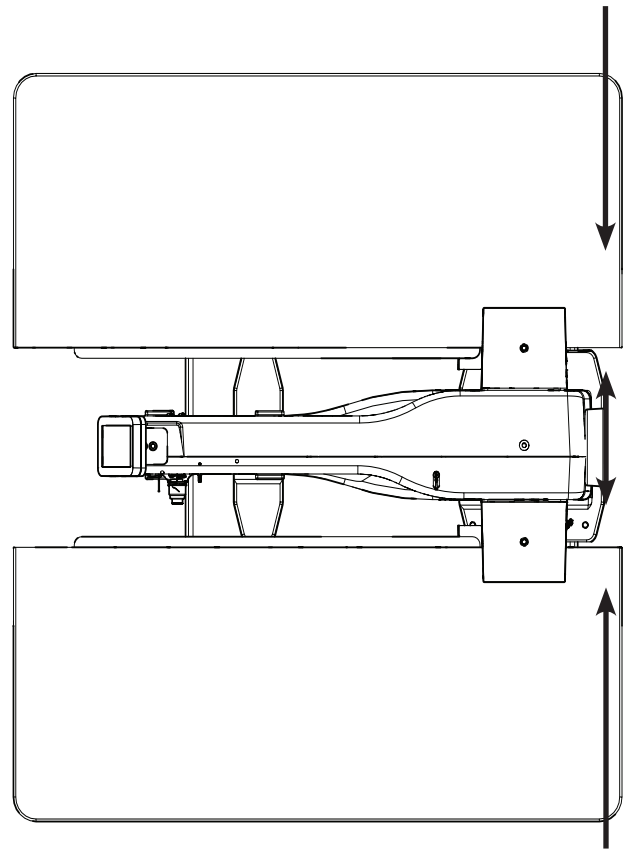
Preparing the Stand Plate

1. Start by loosening the four screws that are threaded into each corner of the stand plate, raising the stand plate to its highest position and then re-tightening the four screws.




2. Align the machine with the opening.


 **NOTE:** The rear of the machine will have the rubber feet on the stand plate and the furthest back part of the machine will be about 1 inch in front of the edge of the rear table top.

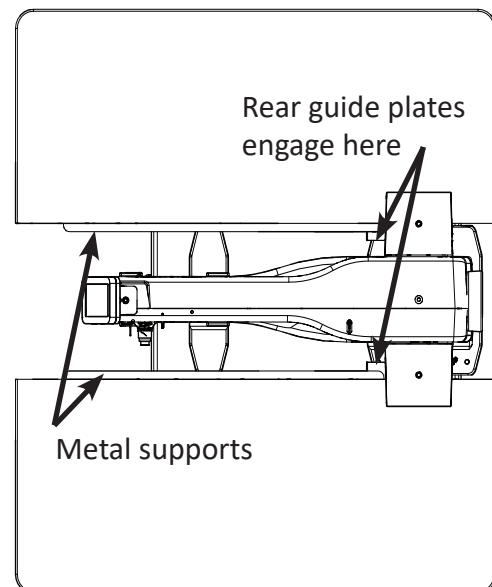
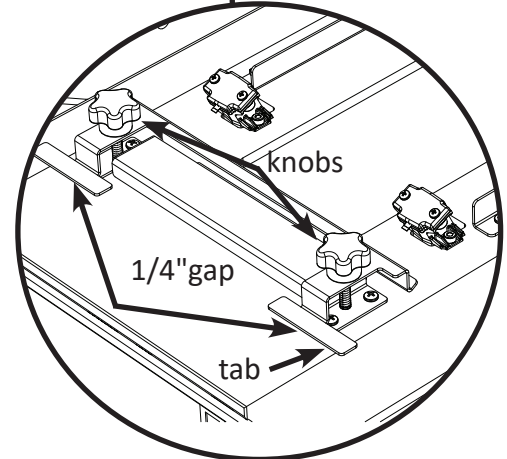
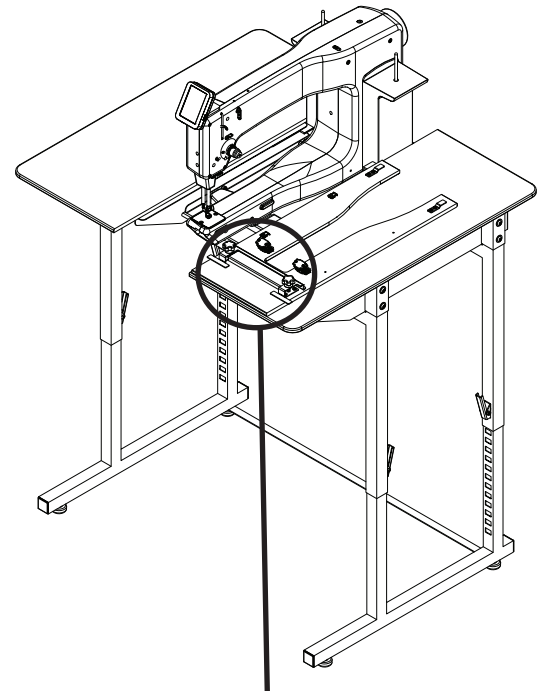


Installing the Insert Assembly

 **NOTE:** The sensors on the bottom of the insert will be very close to the machine. Care must be taken when positioning the machine front to back, side to side, and up and down, to ensure the sensors do not hit the machine when installing the insert into the table.

1. Place the insert face down on the right side of the table top.
2. Loosen the knobs until there is about 1/4" gap between the front guide plate tabs and the insert bottom surface when lifting on the tabs at the front of the insert.
3. Run the two cables along the right side of the stand plate under the guide plate. These cables will connect to the machine and the foot pedal later on.
4. Bring the insert toward you until you can turn it over counter-clockwise to the left.
5. Turn the insert over so the cables are now on the bottom to your right, bring it towards you to the front of the table and then slide it along the insert metal supports on each side of the opening.
6. When you reach the front guide plate you may need to push up on the tabs to allow it to go over the insert metal supports.

 **NOTE:** Ensure that the rear guide plates on the insert engage at the rear as well as the front guide plate at the front.



Fine Adjustment of Machine and Insert

1. Align the insert with the front edge of the table top. This may require moving the machine towards the back.
2. Tighten the two knobs just enough for them to level the insert with the table top on the left and right side.

🔩 **IMPORTANT:** Do not over tighten the knobs.

3. Realign the machine to the insert now that the insert is in place. The machine should touch the front edge of the insert. This may require moving the machine forward.

Fine Adjustment of the Stand Plate

1. While holding up on the front of the stand plate, loosen the left and right front screws. Adjust the stand plate until the highest edge of the machine needle plate is even with the insert.
2. Tighten the two front stand plate screws firmly.
3. If needed loosen the rear left and right screws to adjust the rear stand plate height.
4. Check that the front and back stand plate screws are firmly tightened and that the height is set as desired.

✎ **NOTE:** Check the needle plate area with a straight edge or ruler to confirm the edge does not get caught on the needle plate. If it does, adjust the front of the stand plate accordingly.

✎ **NOTE:** If the stand plate is not adjusted so that all four rubber feet on the machine touch firmly you may have undesirable machine vibration at some speeds. Press on each corner of the machine to make sure the feet are touching and the machine does not rock.

Connections

1. Plug the insert to machine cable with the 9-pin male connector into the back of the machine at the 9-pin female connection.
2. Plug the foot pedal into the 9-pin cable hanging down at the rear of the table. This cable also extends the foot pedal cable.
3. The cables have extra length as a service loop to allow the insert to be moved when cleaning and servicing the machine. The excess front cable length should be tucked up inside the table onto the stand plate. Excess rear cable length should be at the rear of the table so it can be used as a foot pedal extender cable.



Care and Cleaning

- **IMPORTANT:** Care should be taken not to scratch the top surface of the sensors. They should not be cleaned with any cleaner, especially a liquid cleaner that might get into the sensor circuitry. Treat them as an expensive pair of glasses and clean them only with an appropriate lens cleaning cloth for plastic lenses or glasses.

1. Keep the two lenses clean from dust and finger prints using a lens cleaning cloth for plastic eye glasses.
2. Take care not to pinch or pull on cables when connecting, assembling or moving the machine.



Foot pedal plugs into this extension cable