

HQ Sweet Sixteen Upgrade for TruStitch

Instructions for Removing, Shipping and Installing Parts



Electrostatic Discharge (ESD)

Warning: This procedure exposes the control electronics of the

HQ Sweet Sixteen. Care should be taken to avoid handling the open electronics as much as possible. To minimize the risk of damage to the electronics due to ESD, touch an exposed metal part of the quilting machine (such as the thread mast) multiple times throughout the procedure. This will discharge any electrostatic charge that can build up on your body through the machine casting rather than into the control electronics (*which could cause damage*).



Figure 1

Removing the HQ Sweet Sixteen C-Pod

1. Identify the C-Pod. (When facing the needle end of the machine, the C-Pod is on your right side.)
2. With the HQ Sweet Sixteen power switch turned off and the power cord unplugged, remove the four Philips screws that connect the C-Pod to the side of the machine (**Figure 1**).
3. Gently tilt the C-Pod away from the machine base and unplug all cables that are connected to the circuit board within the C-Pod (**Figure 2**).
4. The cable with the largest connector can be plugged into either of the two sockets on the circuit board when the C-Pod is re-installed, so don't worry about which socket it came out of.
5. Two of the three cables at the top of the circuit board have similar connectors (2-pins). When you re-install the C-Pod, the red/yellow cable will plug into the connector on the left and the red/black cable will plug into the connector on the right, which has been marked "Motor" on the circuit board (**Figure 3**).
6. Carefully wrap the C-Pod in protective bubble wrap for shipping.

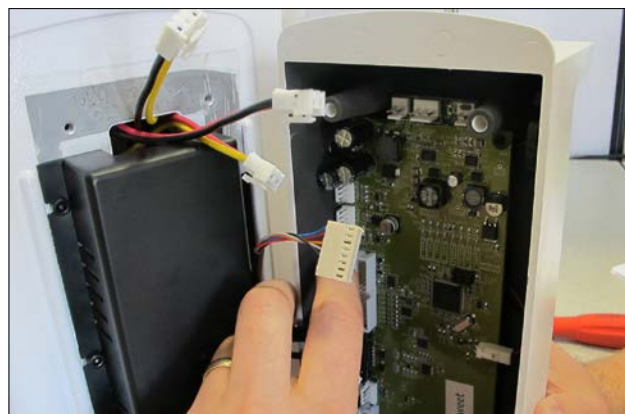


Figure 2

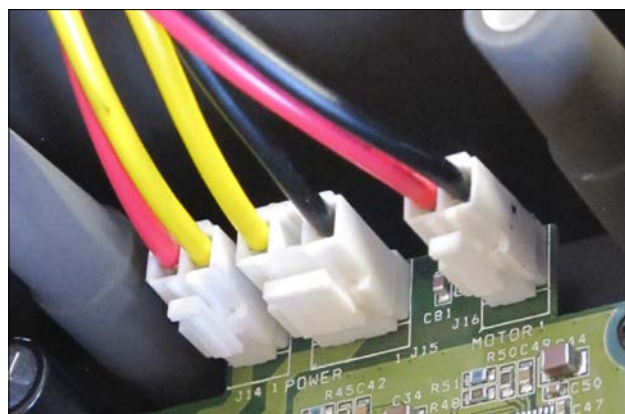


Figure 3

Removing the HQ Sweet Sixteen Display

1. Make sure power has been turned off to the HQ Sweet Sixteen and the power cord removed.
2. Unplug the display cable from the front left-hand side of the HQ Sweet Sixteen (**Figure 4**).
3. Using the 5mm Allen wrench that came with the HQ Sweet Sixteen, remove the two bolts from the display bracket that mount the bracket to the HQ Sweet Sixteen machine (**Figure 5**).
4. With the hinged bracket extended, wrap the display and bracket in protective bubble wrap. (*Do not close the hinge so the bracket hits the display bracket or it could scratch the display box during shipping.*) (**Figure 6**).

Installing the HQ Sweet Sixteen C-Pod

1. Following the ESD warning above and making sure the HQ Sweet Sixteen is unplugged from the wall, plug the HQ Sweet Sixteen cables into their appropriate connectors on the C-Pod. (*Remember the two large identical connectors can be plugged in either slot and at the top, the red/yellow cable goes on the left and the red/black cable goes on the right where it is marked "Motor".*).



Figure 4



Figure 5



Figure 6

2. Gently guide the cables back into the machine slots while putting the C-Pod back in place on the HQ Sweet Sixteen. Make sure no cables are being pinched by the edges of the C-Pod and that they are out of the path of the mounting screws (**Figure 7**).
3. Mount the C-Pod with the 4 Philips screws, tightening just until snug.

Installing the HQ Sweet Sixteen Display

1. Mount the display to the HQ Sweet Sixteen using the two 5mm Allen-head screws and a 5mm Allen wrench (**Figure 8**).
2. Plug the display cable into the side of the HQ Sweet Sixteen (**Figure 9**).



Figure 7



Figure 8



Figure 9



**For further questions,
please contact us at:
877-697-8458 or 801-292-7988
445 N 700 W
North Salt Lake, Utah 84054**